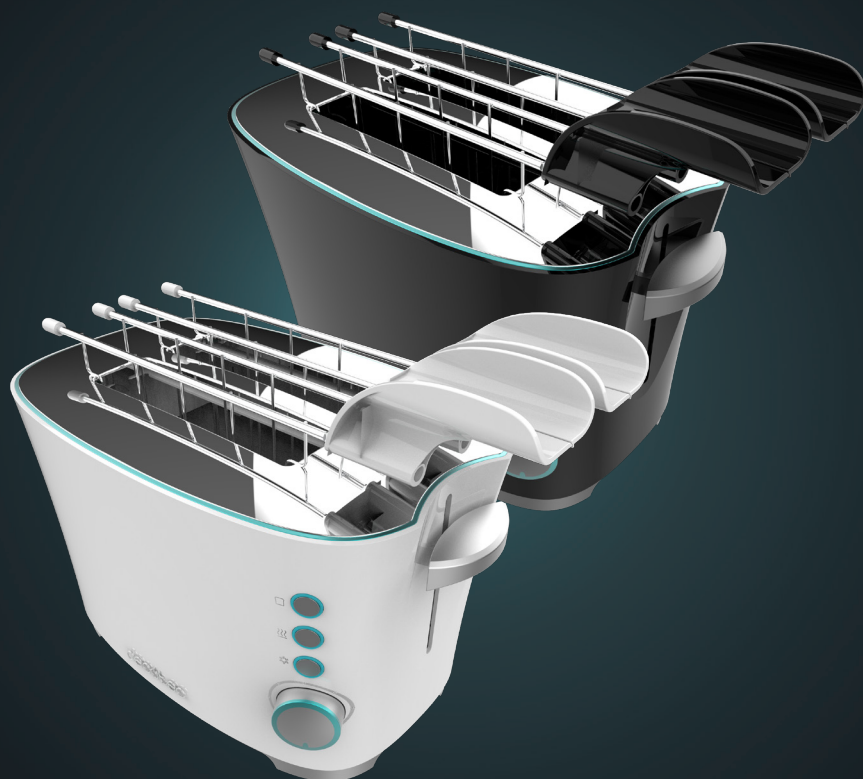


cecotec

TOAST&TASTE DOUBLE W

TOAST&TASTE DOUBLE B

Tostadora / Toaster



Manual de instrucciones
Instruction manual
Manuel d'instructions
Bedienungsanleitung
Manuale di istruzioni
Manual de instruções
Handleiding
Instrukcja obsługi
Návod k použití

| | |
|----------------------------|----|
| Instrucciones de seguridad | 4 |
| Safety instructions | 7 |
| Instructions de sécurité | 10 |
| Sicherheitshinweise | 13 |
| Istruzioni di sicurezza | 16 |
| Instruções de segurança | 19 |
| Veiligheidsvoorschriften | 22 |
| Instrukcje bezpieczeństwa | 25 |
| Bezpečnostní pokyny | 28 |

ÍNDICE

| | |
|-----------------------------------|----|
| 1. Piezas y componentes | 31 |
| 2. Antes de usar | 31 |
| 3. Funcionamiento | 32 |
| 4. Limpieza y mantenimiento | 33 |
| 5. Especificaciones técnicas | 33 |
| 6. Reciclaje de electrodomésticos | 34 |
| 7. Garantía y SAT | 34 |
| 8. Copyright | 34 |

INDEX

| | |
|---|----|
| 1. Parts and components | 35 |
| 2. Before use | 35 |
| 3. Operation | 36 |
| 4. Cleaning and maintenance | 37 |
| 5. Technical specifications | 37 |
| 6. Disposal of old electrical and electronic appliances | 37 |
| 7. Technical support and warranty | 38 |
| 8. Copyright | 38 |

SOMMAIRE

| | |
|----------------------------------|----|
| 1. Pièces et composants | 39 |
| 2. Avant utilisation | 39 |
| 3. Fonctionnement | 40 |
| 4. Nettoyage et entretien | 41 |
| 5. Spécifications techniques | 41 |
| 6. Recyclage des électroménagers | 42 |
| 7. Garantie et SAV | 42 |
| 8. Copyright | 42 |

INHALT


| | |
|--|----|
| 1. Teile und Komponenten | 43 |
| 2. Vor dem Gebrauch | 43 |
| 3. Bedienung | 44 |
| 4. Reinigung und Wartung | 45 |
| 5. Technische Spezifikationen | 45 |
| 6. Entsorgung von alten Elektrogeräten | 46 |
| 7. Garantie und Kundendienst | 46 |
| 8. Copyright | 46 |

INDICE

| | |
|------------------------------------|----|
| 1. Parti e componenti | 47 |
| 2. Prima dell'uso | 47 |
| 3. Funzionamento | 48 |
| 4. Pulizia e manutenzione | 49 |
| 5. Specifiche tecniche | 49 |
| 6. Riciclaggio di elettrodomestici | 50 |
| 7. Garanzia e supporto tecnico | 50 |
| 8. Copyright | 50 |

SAFETY INSTRUCTIONS

Before using the appliance, read the following instructions carefully. Keep this instruction manual for future reference or new users.

- All safety instructions must be closely followed when using the appliance.
- This device is designed for domestic use only and is not intended for bars, restaurants, farmhouses, hotels, motels, and offices.
- The appliance is not intended to be used by children under the age of 8. The appliance can be used by children over the age of 8, as long as they are given continuous supervision.
- This appliance can be used by children aged 8 and above and persons with reduced physical, sensory, or mental capabilities or lack of experience and knowledge, as long as they have been given supervision or instruction concerning the use of the appliance in a safe way and understand the hazards involved.
- Keep this appliance and its power cable out of reach of children under the age of 8. Cleaning and maintenance should not be carried out by children without supervision.
- Supervise children to prevent them from playing with the appliance. Close supervision is necessary if the appliance is used by or near children.
- This appliance is not intended to be operated by means of an external timer or separate remote-control system.
-  This symbol means: caution, hot surface. The accessible surfaces of the appliance may reach high temperatures during operation. Be careful not to burn yourself.
- Bread can burn, so the toaster should not be used near or under combustible materials such as curtains.

- Check the power cable regularly for visible damage. If the cable is damaged, it must be replaced by the official Cecotec Technical Support Service to avoid any danger.
- Place the appliance on an even, heat-resistant surface. Do not place the appliance near heat sources, places with high humidity levels, or combustible materials.
- Do not immerse the cable, plug, or any part of the appliance in water or any other liquid. Do not expose the electrical connections to water. Make sure your hands are dry before handling the plug or switching on the device.
- Ensure that the mains voltage matches the voltage specified on the appliance marking and that the mains plug is earthed.
- Do not use the appliance if the cable, plug, or frame is damaged or if it is malfunctioning, has been dropped, or damaged.
- Do not twist, bend, pull, or damage the power cable. Protect it from sharp edges and heat sources. Do not allow the cable to touch hot surfaces. Do not let the cable hang over the edge of the working surface or worktop.
- Do not leave the appliance unattended during operation. Unplug the appliance from the wall socket when you have finished using it, when you leave the room where it is located, when it is not being used, and before cleaning it. Pull from the plug, not the cable, to disconnect it from the outlet.
- This appliance is designed for toasting unseasoned bread only. Do not use it for any other purpose, and follow the instructions described in this manual. Do not toast moist foods or bread spread with butter, jam, glaze, or any other condiments in the toaster, as this may cause fire or smoke.
- Ensure there is enough space above the appliance and on both sides to provide proper air circulation.
- Do not cover the toaster with aluminium foil or similar materials.

- Do not insert objects (utensils, fingers, or any other foreign object) into the appliance, as this may cause fire, electric shock, or injury.
- If the appliance does not work properly or if you notice fire or smoke, switch it off immediately and unplug the appliance from the mains.
- Do not try to repair the appliance by yourself. Contact the official Cecotec Technical Support Service for advice.
- No liability is accepted for any possible damage or personal injury resulting from misuse of the appliance or non-compliance with these operating instructions.

1. PARTS AND COMPONENTS

Fig. 1

1. Main body
2. Crumb tray
3. Toasting slot
4. Lever
5. Intensity knob
6. Stop button
7. Reheat button
8. Defrost button
9. Stainless-steel tongs

NOTE:

the graphics in this manual are schematic representations and may not exactly match the device.

2. BEFORE USE

- This appliance is packaged in a way as to protect it during transport. Take the device out of its box and remove all packaging materials. You can keep the original box and other packaging elements in a safe place. This will help you prevent damage to the device when transporting it in the future. In case the original packaging is disposed of, make sure all packaging materials are recycled accordingly.
- Make sure all parts and components are included and in good conditions. If there is any piece missing or in bad conditions, contact the official Cecotec Technical Support Service immediately.
- Plastic wrapping can cause suffocation hazards for babies and young children. Make sure all packaging materials are out of reach of children.
- Inspect all parts of the appliance for visual damage. Unwind the power cable completely and inspect it for damage. Do not use the product if it or its cord have been damaged or are not working properly. In case of damage, contact the official Technical Support Service of Cecotec for advice, repairs or returns.
- Make sure you have read and understood all instructions and warnings in this instruction manual. Pay particular attention to the safety instructions on previous pages.
- Remove any adhesive labels and wipe the outside of the toaster with a damp cloth. Make sure no packaging materials remain in the toasting slot and no object has fallen inside the toaster.
- Place the toaster on an even, heat-resistant surface. Do not place the toaster near heat sources, places with high humidity levels, or combustible materials.

ENGLISH

- Plug the toaster into an appropriate wall outlet. The plug must be easily accessible to disconnect it quickly in case of an emergency.
- Clean the toaster (read the "Cleaning and maintenance" section). Run the toaster at maximum intensity level for at least 2 minutes.

Please note

- You may notice a slight burning smell or smoke when using the toaster for the first time, caused by the excess of lubricants from the manufacturing process. Ensure good ventilation and let the toaster complete a few cycles until no odour or smoke can be noticed.

After a short cooling down period, your toaster will be ready for use. The operation instructions are detailed below.

3. OPERATION

1. Plug the toaster into a power supply and introduce the bread loaves in the toaster's slots.
2. Turn the intensity level knob to the desired position.
3. Lower the lever, the toaster will start operating and the Stop button light will turn on.
4. The toaster will eject the bread loaves and will turn automatically off when it has finished toasting.
5. Use the extra-lift system to remove the smallest bread pieces.

Reheat function

- Use this function to reheat cold toast.
- Introduce the toast in the toaster and lower the lever. Press the reheat button to select this function.

Defrost function

Introduce the toast in the toaster and lower the lever. Press the defrost button to select this function.

Stop function

To stop the toasting process at any time, press STOP.

Crumb tray

- The tray is designed to collect the breadcrumbs at the bottom of the device during the toasting process.
- Press on the crumb tray to unlock it and to take it out.
- Empty it and then put it back in its position.

Stainless-steel tongs

Stainless steel tongs can be used to easily take out the toasted bread or to prepare stuffed sandwiches.

4. CLEANING AND MAINTENANCE

- Unplug the toaster from the mains supply and allow it to cool down completely before disassembling, cleaning, or storing it.
- Do not immerse the toaster, cord, or plug in water or any other liquid.
- Do not clean the inside of the toaster, as it may damage the heating elements.
- Do not use a metal scouring pad, abrasive materials, metal polish, harsh chemical cleaner, or hard objects to clean any surface of the toaster.
- Wipe the outside surfaces of the toaster with a soft cloth or sponge and mild detergent.
- Remove the remaining crumbs after each use.
- Store the toaster in a clean, dry place when not in use. Make sure the appliance is clean and dry, and unplugged from the power supply.
- It is recommended to store the appliance in its original box, which will protect it from dust.
- When storing the toaster, the power cord must be stored in the space to that purpose on the bottom of the appliance. Simply wind the power cord around the hooks.

5. TECHNICAL SPECIFICATIONS

Product: Toast&Taste Double W / Toast&Taste Double B

Product reference: 02181 / 02184

Power: 650 W

Voltage and frequency: 220-240 V / 50/60 Hz

Technical specifications may change without prior notification to improve product quality.

Made in China | Designed in Spain

6. DISPOSAL OF OLD ELECTRICAL AND ELECTRONIC APPLIANCES

This symbol indicates that, according to the applicable regulations, the product and/or batteries must be disposed of separately from household waste. When this product reaches the end of its shelf life, you should dispose of the cells/batteries/accumulators and take them to a collection point designated by the local authorities.

Consumers must contact their local authorities or retailer for information concerning the correct disposal of old appliances and/or their batteries.

Compliance with the above guidelines will help protecting the environment.

7. TECHNICAL SUPPORT AND WARRANTY

Cecotec shall be liable to the end user or consumer for any lack of conformity that exists at the time of delivery of the product under the terms, conditions, and deadlines established by the applicable regulations.

It is recommended that repairs be carried out by qualified personnel.

If at any moment you detect any problem with your product or have any doubt, do not hesitate to contact the official Cecotec Technical Support Service at +34 963 210 728.

8. COPYRIGHT

The intellectual property rights over the texts in this manual belong to CECOTEC INNOVACIONES, S.L. All rights reserved. The contents of this publication may not, in whole or in part, be reproduced, stored in a retrieval system, transmitted, or distributed by any means (electronic, mechanical, photocopying, recording or similar) without the prior authorization of CECOTEC INNOVACIONES, S.L.